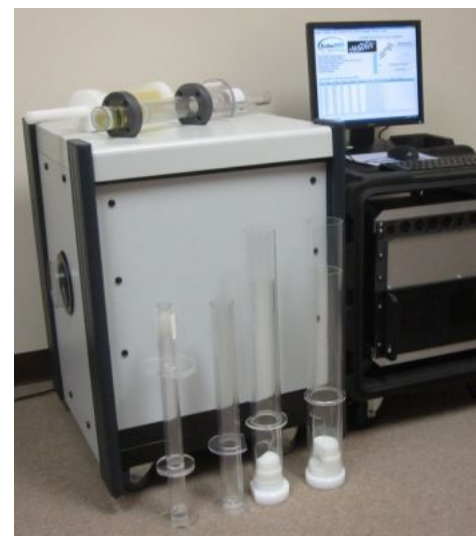




## Birds and Bats Body Composition Analyzer Product Specifications



### **General**

Dimensions:	Magnet Enclosure: 28"W x 24"D x 33"H / 71cm x 61cm x 84cm Acquisition Enclosure: 28"W x 28"D x 30"H/71cm x 71cm x 76cm
Weight:	Magnet Enclosure: 300lbs / 135Kg Acquisition Enclosure: 100lbs / 45Kg
Acquisition Enclosure:	100lbs / 45Kg
Instrument power:	1 outlet at 115/230 VAC, 50-60 Hz, 500 W, 8A/4.5A
Shielding:	The 5-Gauss magnetic field is fully contained inside the rack with two exceptions: a 9"-radius hemisphere protruding from the rack at the bore opening and a similar hemisphere directly opposite to the bore opening.
Holders:	3 animal holders of custom-defined sizes, typically 50, 100, and 200 grams
Mobility:	Magnet Enclosure on vibration dampeners Acquisition Enclosure in a ruggedized rack case
Warm-up Time:	5 - 10 minutes after turning power on

### **Interfaces**

Operating System:	Windows 10 Professional
User Input:	Keyboard, mouse, and ASCII files
User Output:	Monitor and files: ASCII, Excel, Access
Communication Ports:	2 USB / 1 RJ45 CAT-5 10/100Mb network card

Monitor: 17" LCD flat screen

***Functions***

Measuring time: 0.5 - 3.2 minutes, depending on the precision option

Calibration: Not required after installation

Records: Automatic save in file system and database

Measured: The whole body masses of Fat, Lean, Free Water, and Total Water